



88, HARBOURSIDE, INVERKIP, PA16 0BF





Description

This stunning 3 bedroom MID TERRACED TOWNHOUSE offers immaculately presented family living over 3 levels, featuring enviable views over the Kip Marina from desirable position in this sought after development. Quality internal finishes include: oak doors, oak banister with feature wrought iron ornate detailing, stylish window shutters, quality tiled and walnut flooring. We are advised the exterior was repainted in 2022.

Driveway with space for one car which leads to the integral garage. A utility area within the garage includes plumbing for a washing machine. The enclosed landscaped private rear garden is an ideal space for relaxing on summer days. Specification includes: double glazing and gas central heating with new boiler in 2021.

The Kip Marina is recognised as one of Scotland's finest marinas. Inverkip has a railway station with regular service to Glasgow and also offers good road links, plus range of local amenities.

Stylish living comprises: Entrance Vestibule leads to the Reception Hallway with two inbuilt cupboards and is on open plan with the luxury refitted Dining Kitchen, this space features underfloor heating. There are quality light grey units and solid granite worktops with feature island unit. A double glazed door gives direct access to the rear garden. There is downstairs Plumbed Cloakroom.

Stairway with ornate banister leads to the 1st floor landing. The front facing Lounge / Dining Room is a bright, spacious "L" shaped apartment with two separate window formations each leading to a Juliet balcony and enjoys excellent views over the Marina. This is an ideal space for relaxing and entertaining. The 3rd double Bedroom is on this floor.

Staircase leads to Upper Landing. Airy Master Bedroom benefits from superb marina views and two generous fitted wardrobes, plus a quality Ensuite Bathroom. The 2nd double Bedroom features an Ensuite Shower Room with quality suite. EPC = C

Measurements

Entrance Vestibule

Hallway
12'9 x 8'7

Plumbed Cloakroom

Dining Kitchen
5.41m x 4.09m (17'9 x 13'5)

1st Floor Landing

Lounge/Dining Room
5.54m x 7.01m (18'2 x 23'0)

Bedroom 3
5.49m x 2.92m (18'0 x 9'7)

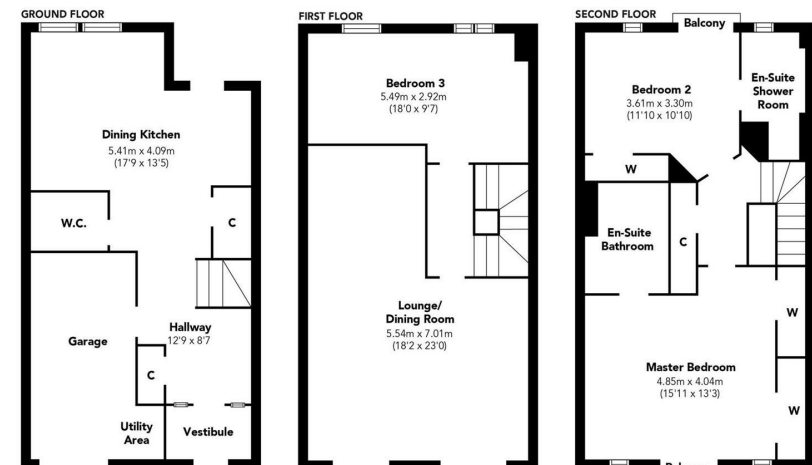
2nd Floor Landing

Bedroom 2
3.61m x 3.30m (11'10 x 10'10)

Ensuite Shower Room

Master Bedroom
4.85m x 4.04m (15'11 x 13'3)

Ensuite Bathroom



Floorplans are indicative only - not to scale
Produced by Plushplans 











The
next
step..



To view call 01475 888400. Speak to us 7 days a week until 11pm every day to book your viewing appointment.

House to sell or rent?

Call 01475 888400 to book your free market appraisal.

Require a solicitor?

Ask us to supply a free legal quotation from Neill Clerk & Murray, Solicitors.
www.neillclerkmurray.co.uk

Stay fully up-to-date by following Neill Clerk on:



**60 West Blackhall Street
Greenock
Renfrewshire
PA15 1UY**

t: 01475 888400

e: sales@neillclerk.co.uk

w: www.neillclerk.co.uk



Agents Notes:

These sales particulars are set out as a general outline only, issued in good faith, but do not constitute representations of fact and do not form part of any offer or contract. Any services, equipment, appliances, fittings or central heating systems have not been tested and no warranty is given or implied that these are in working order. All measurements are approximate and for guidance only.

Neither Neill Clerk Estate Agents nor any of its employees or agents has any authority to make or give any representation or warranty whatever in relation to this property.

Find all our properties at: [rightmove](https://www.rightmove.co.uk) [Zoopla](https://www.zoopla.co.uk) [onTheMarket.com](https://www.onthemarket.com) [s1homes.com](https://www.s1homes.com)